



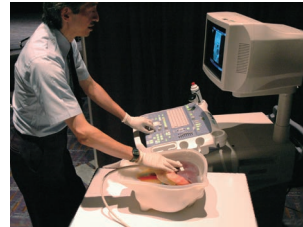
# Abdominal Intraoperative & Laparoscopic Ultrasound Phantom "IOUSFAN"

## Effective training tool for abdominal intraoperative ultrasound examination

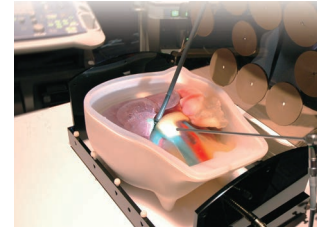
Phantom of abdominal organs to simulate ultrasound examinations during open and laparoscopic surgery

### Product Supervision

Junji Machi, MD, PhD  
University of Hawaii at Manoa and Kuakini Medical Center



Intraoperative ultrasound



Laparoscopic ultrasound

### ANATOMY and PATHOLOGIES

#### Liver

- | segmental anatomy
- | portal and hepatic venous system
- | ligamentum teres and ligamentum venosum

#### Biliary Tract

- | gall bladder
- | cystic duct
- | intrahepatic and extrahepatic bile ducts

#### Pancreas

- | pancreatic duct

#### Spleen

#### Kidneys

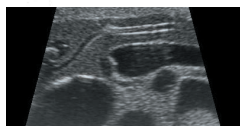
#### Detailed vascular structures

- | aorta
- | vena cava
- | celiac artery and branches
- | portal vein and branches
- | superior mesenteric vessels
- | renal vessels

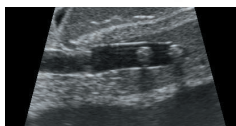
#### Biliary Stones and Cysts

#### Solid Tumors in liver, pancreas, spleen and kidneys

- | hypoechoic
- | hyperechoic



Pancreatic head



Bileduct stones



Gallstones

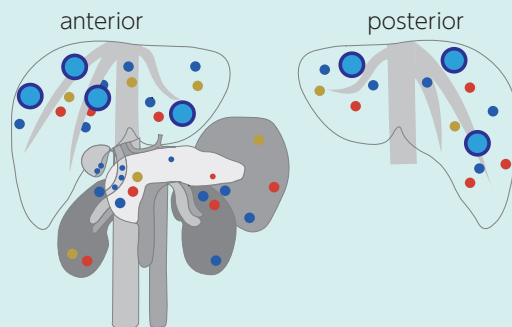
### FEATURES

- 1 | Soft phantom materials allow realistic probe manipulation.
- 2 | Various simulated lesions.
- 3 | Detachable stomach and duodenum for various scanning of the bile duct and pancreas.

### SKILLS

- | Abdominal intraoperative ultrasound examination
- | Laparoscopic ultrasound examination

### Pathologies Sites



- **Simulated cysts**  
1 cm / 0.4 in
- **Hypoechoic**  
1 cm / 0.4 in
- **Simulated tumors**  
1 cm / 0.4 in
- **Simulated tumors with double edge**  
2 cm / 0.8 in

### DESCRIPTIONS

#### SPECIFICATIONS

Size: W30 x D38 x H17.5 cm    Weight: 5.8kg / 12.8lbs  
W11.8 x D15 x H6.9 inch

#### SET INCLUDES

- 1 | upper abdomen ultrasound phantom
- 1 | stomach ultrasound phantom
- 1 | phantom container
- 1 | tutorial manual (DVD)
- 1 | instruction manual

#### MATERIALS

Polyurethane elastomer  
Latex free

#### RECOMMENDED DEVICES

-

\*Ultrasound scanner is not included.