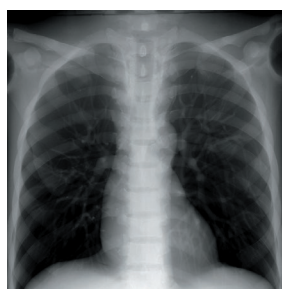


PH-60 | 41925-000

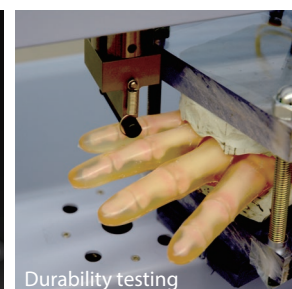
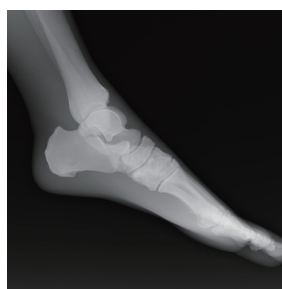
Tough Whole Body Phantom "PBU-90 RUGGED"



New phantom material is designed for rough handling, improved durability and less maintenance



SHOW MORE!



ANTHROPOMORPHIC PHANTOMS

FEATURES

- | Radiology absorption and HU number approximate to human body.
- | Main joints have close-to human articulation
- | Phantom can be disassembled into 10 individual parts

APPLICATIONS

- | Plain X-ray
- | Basic patient positioning
- | Basic CT

PBU-90 allows training scenarios that involve rough handling. Details of the bones in the hands and the feet are simplified compared to those of PBU-50/60 for increased durability.

ANATOMY

skull / spine / clavicles / scapulae / ribs / sternum / coxal bones / lungs with pulmonary vessels / trachea (up to primary bronchi) / heart / liver with portal and hepatic veins / kidneys / humerus / antebrachial bone / bones of hand / femur / patella / lower leg bone / bones of foot

DESCRIPTIONS

SET INCLUDES

1 whole body phantom	1 hand -fixture belt
1 head supporter	1 set of sample X-ray data (DVD)
1 flat head screwdriver	1 manual

SPECIFICATIONS

Phantom height:	Packing size:
165 cm	W92 x D57 x H38 cm/W36 x D22 x H15 in
65 in	W90 x D63 x H22 cm/W35 x D25 x H8.7 in
Phantom weight:	W89 x D57 x H16 cm/W35 x D22 x H6.3 in
50 kg / 110 lb	Packing weight:
	80 kg / 176 lb

MATERIALS

Soft tissue: urethane based resin (density: 1.12)
*Phantom has no metal parts or liquid structure

OPTIONAL PARTS

41363-070	storage cases (consist of 2 boxes)
41350-200-16	body plates for PH-2/2B (BMI 32)
41350-200-17	body plates for PH-2/2B (BMI 40)

