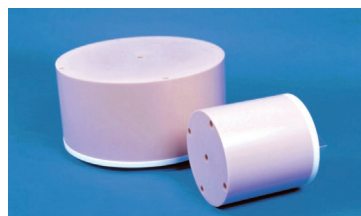


PH-59 | 41924-000

CT-DI Phantom (Head and Body Phantom)



A set of phantoms for CTDI-100, conforming to requirements described in 21 CFR 1020.33, IEC 61223-3-5: 2004, and IEC 61223-2-6: 2006 as consistency test



A set with different type of tissue substitute can be custom-ordered

SHOW MORE!

FEATURES

- | Represent adult head and body as well as pediatric body
- | Can be used for initial and follow-up QA tests

Evaluation Parameters

- | Computed Tomography Dose Index (CTDI)
- | Dose profile

DESCRIPTIONS

SET INCLUDES

- 1 head phantom
- 1 body phantom
- 10 filling rods manual

SPECIFICATIONS

Phantom size:
 Body phantom: 32 dia. x 15 cm / 12.6 dia. x 5.9 in
 Head phantom: 16 dia. x 15 cm/ 6.3 dia. x 5.9 in

Phantom weight:
 15kg/ 33lb
 4kg/ 8.8lb

MATERIALS

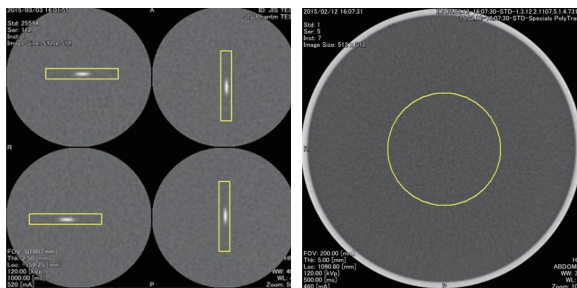
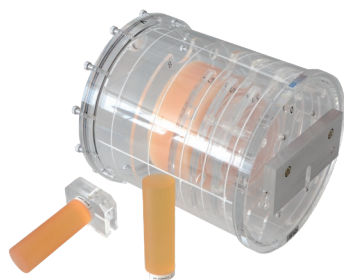
Acrylic resin

PH-54 | 41919-000

CT QA Phantom JCT II



Renovated CT QA phantom for initial test at the time of reception, as well as follow-up periodical quality check of CT scanners



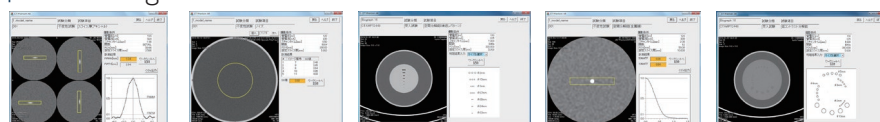
SHOW MORE!

FEATURES

- | The phantom can be used for initial and follow-up QA tests listed below, described in JIS Z 4752-3-5: 2008 (IEC 61223-3-5: 2004) and Z 4752-2-6: 2012 (IEC 61223-2-6: 2006)
- | Conforming to JIS Z 4923:2015

EVALUATION PARAMETERS

- | Axial scan:
 Slice thickness / spatial resolution / low contrast resolution / noise / mean HU number / uniformity
- | Helical scan:
 Slice thickness



*System requirements of software : OS Windows 7 (64 bit), Windows 8.1 Pro (64 bit), memory 4GB, HDD 250 GB

DESCRIPTIONS

SET INCLUDES

- 1 cylindrical container (fixing screw)
- 1 slice thickness unit (axial)
- 1 spatial resolution unit
- 1 repeated pattern unit
- 1 low contrast resolution unit
- 2 slice thickness unit (helical)
- 1 fixture for the slice thickness unit
- 1 fixture for the cylindrical container
- 1 Vaseline
- 1 set of screws (spare)
- 1 angle adjustment holder(table top type) manual

MATERIALS

Acrylic resin, polyurethane, stainless

SPECIFICATIONS

Phantom size:
 20 dia. x 20 cm / 7.9 dia. x 7.9 in
 Phantom weight:
 3 kg / 6.6 lb

