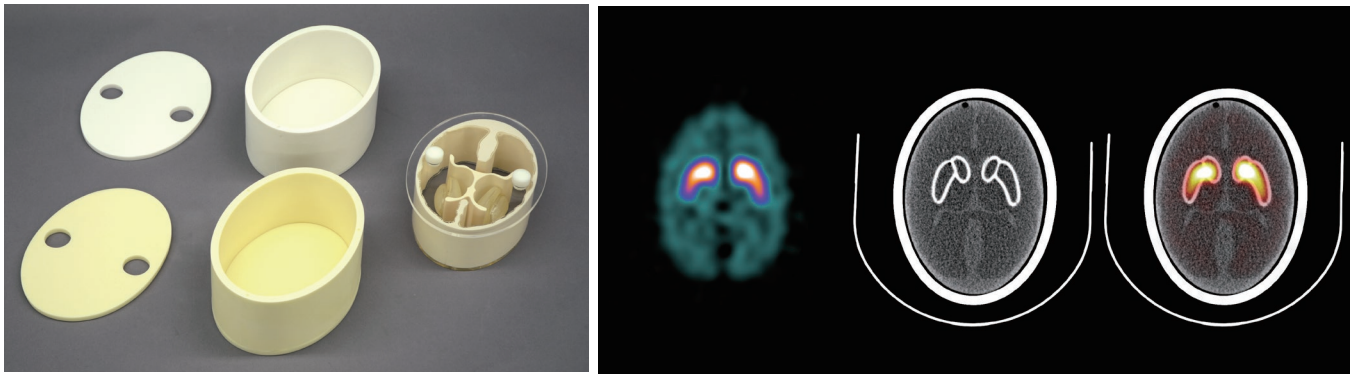


PH-53 | 41918-000

Brain Phantom IB-20 advanced



For uptake ratio calibrations and studying the L-123DaTSCAN scatter correction techniques



FEATURES

This brain phantom of the striatal region with replicated skull densities of a male and female is useful for uptake ratio calibrations and studying the I-123 DaTSCAN scatter correction techniques.

APPLICATIONS

SPECT, PET
EVALUATION PARAMETERS:
common with IB-20

DESCRIPTIONS

SET INCLUDES

- 2 bone scatterer cases
adult male: equivalent HU750
elderly female: equivalent HU530
- 1 brain striatum phantom
- 1 screwdriver

- 1 velcro tape
- 1 petroleum jelly
- 1 storage case manual

SPECIFICATIONS

Phantom size:
W21 x D15 x H8 cm
W8.2 x D5.9 x H3.1 in

MATERIALS

Brain striatum: epoxy resin
Brain striatum container: urethane resin
Cerebral ventricle: urethane resin
Brain stratum phantom cover: acrylic
Bone scatterer case: epoxy resin

PH-27 41530-000

Brain Phantom IB-10

Dual-fluid system to vary the absorption rate, and 5 cm thickness for the vertical setting of the camera



SHOW MORE!



APPLICATIONS

SPECT, PET

EVALUATION PARAMETERS

- Homogeneity evaluation
- Detectivity of gray matter and white matter
- Cross calibration
- Spatial resolution of negative images (IB-10 set only)
- Gamma ray absorption rate by a skull
- Radioactive concentration and linearity of SPECT value (IB-10 set only)

DESCRIPTIONS

SET INCLUDES

- 1 brain unit
- 1 skull container unit
- 1 J-Jack phantom
- 1 section phantom

MATERIALS

Acrylic resin/ urethane resin

SPECIFICATIONS

Phantom size:
W21 x D15 x H8 cm / W8.2 x D5.9 x H3.1 in