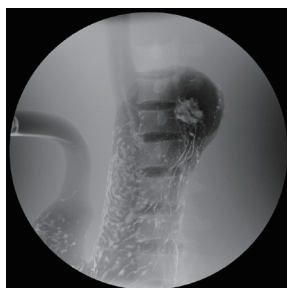


PH-18 | 41311-000

Stomach Phantom BMU-1



Stomach phantom for double contrast gastrography



FEATURES

- | Life-size distended stomach with lesions modeled from real specimens
- | Barium can be poured in the stomach for imaging
- | Pathology includes early cancer and gastric ulcer

APPLICATIONS

- | Double contrast gastrography

DESCRIPTIONS

SET INCLUDES

- 1 stomach phantom
- 1 storage case

SPECIFICATIONS

Phantom size:
W30 x D20 x H33 cm
W11.8 x D7.9 x H13 in

Phantom weight:
16 kg / 35.3 lb

Packing size:
W51 x D39 x H51 cm
W20 x D15.3 x H20 in

Packing weight:
20 kg / 44 lb

MATERIALS

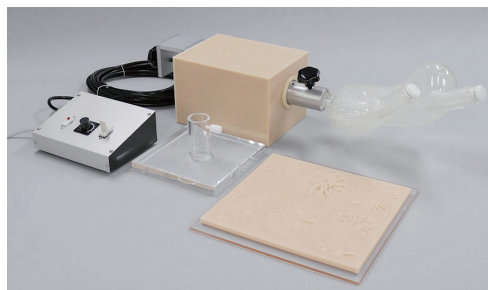
Soft tissue: urethane based resin (density: 1.31)

PH-19 | 41312-010

Rotation Stomach Phantom TMP-R



Rotational phantom to simulate double contrast gastrography



FEATURES

- | Rotation system to simulate the movement of patient
- | Life-size distended stomach with lesions modeled from real specimens
- | Barium can be poured in the stomach for imaging
- | Pathology includes early cancer and gastric ulcer

APPLICATIONS

- | Double contrast gastrography

DESCRIPTIONS

SET INCLUDES

- | | |
|-------------------|--------------------|
| 1 stomach phantom | 1 phantom holder |
| 1 rotation unit | 1 model of lesions |
| 1 controller | 1 storage case |

SPECIFICATIONS

Phantom size:
W25 x D18 x H28 cm
W9.8 x D7.1 x H11 in

MATERIALS

Urethane based resin / epoxy resin

OPTIONAL PARTS

41312-010-01 Extension bar

