

M40

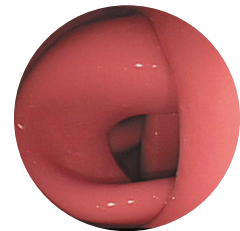
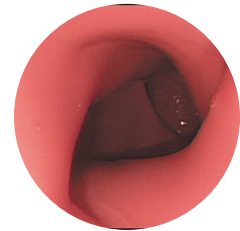


Colonoscope Training Simulator

Training for safe and effective colonoscopy

Soft and flexible colon tube provides a life like colonoscopy simulation

With focus on patient safety, skills like loop prevention can be practiced for safe advancement to the cecum



FEATURES

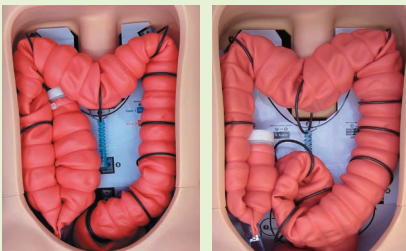
- 1 | Offers a variety of difficulty levels. From simple to complex cases
- 2 | The colon tube can be made airtight, allowing for air insufflation and suction
- 3 | The anal sphincter opening can be manipulated with a hand pump

SKILLS

| Colonoscopy

KEY FEATURES

Select training difficulty level



Adjustable opening of the anus



Positioning of the body



DESCRIPTIONS

SPECIFICATIONS

Size: 48 x 22 x 30 cm/18.9 x 8.7 x 11.9 inch

Weight: 6.5kg / 14.3lbs

SET INCLUDES

1 abdomen model	30 endoscope lubricants (20 ml each)
1 colon rectum tube	1 plastic bottle
1 anus unit	1 stand
1 air bulb	1 rubber sheet
1 abdomen skin cover	1 anus plug
1 set colon fixture	1 training guide
5 colon layout guides (6 cases total)	1 storage case
30 lubricants for colon-rectum tube (50 ml each)	1 instruction manual

MATERIALS

Soft resin, hard resin
Latex free

REPLACEMENT PARTS

11361-010	1 colon-rectum tube
11361-020	1 anus unit
11361-030	1 colon fixture set
11361-120	1 set of colon layout guide
11361-040	lubricant for colon-rectum tube (blue packs) 30 pcs x 50 ml each
11361-050	endoscope lubricant (pink packs) 30 pcs x 20 ml each
11361-090	anus plug for MW40
11361-100	plastic bottle for MW40
11361-110	stand for MW40

* Colonoscope is not included.